

# Koḡnje! eo an Kabna im Network eo an Arkansas kōn Nañinmej in Utaḡwe ko ilo Eddekḡok

## The Governor's Council on Developmental Disabilities

Arkansas Governor's Council on Developmental Disabilities (GCDD ak Koḡnje!) ak Kabna eo kōn Nañinmej in Utaḡwe ko ej oḡaake bwe en jino jermal im bōk kūtien Kakien in ḡaetan, Developmental Disabilities Assistance and Bill of Rights Act, ilo Arkansas ḡan loloodjake bwe ro ewōr developmental disabilities (DD) ak nañinmej in utaḡwe ko ilo eddekḡok im baamḡe ko aer ren bōk koḡaer ilo kōmḡmani community service ko ak jermal ko ilo jukjuk in pād eo me rej kalōñḡok opportunity ak wāween ko ḡan mour im jermal ilo pukwōn ko rej pād ie.

Koḡnje! eo ej jermal ḡan kōkōmānḡanḡok an ro ilo Arkansas im ewōr aer nañinmej in utaḡwe ko ilo eddekḡok maroñ make mour im jermal im ḡan lukkuun lale bwe ren kobaḡok im bōk koḡaer ilo makūtḡūt ko ippān aolep ilo jukjuk in pād eo. Makūtḡūt ko raorōk im rejḡap ekoba:

- Kōḡapḡok im kōkajoorḡok an rein ewōr aer nañinmej in utaḡwe bōk koḡaer ilo aer maroñ jutak im kōnono kōn abḡōḡō im aikuj ko aer ilo aolepen state eo
- Rie būrookraamḡ ko ḡan loi im julok kapañpañ ko ḡan meḡeḡe ko, service ko im jipañ
- Advocate ak kōnono im kwaḡok ainikien ḡan kōmḡman oktak ko ilo kakien ḡan kalōñḡok jikin jermal ko repellok ḡan aolep kain armej im eḡap jīaiik doon ḡan tōpari
- Ejaaki im rie coalition ak doulul ko rej koba in elōñ doulul ḡan ippān doon im kōmḡmane juon jermal
- Rejañ advocacy ak jermal in kōnono im kwaḡok ainikien ko kōn abḡōḡō im aikuj ko an nañinmej in utaḡwe ḡan karoñ wōt rikōmḡman kien ro.

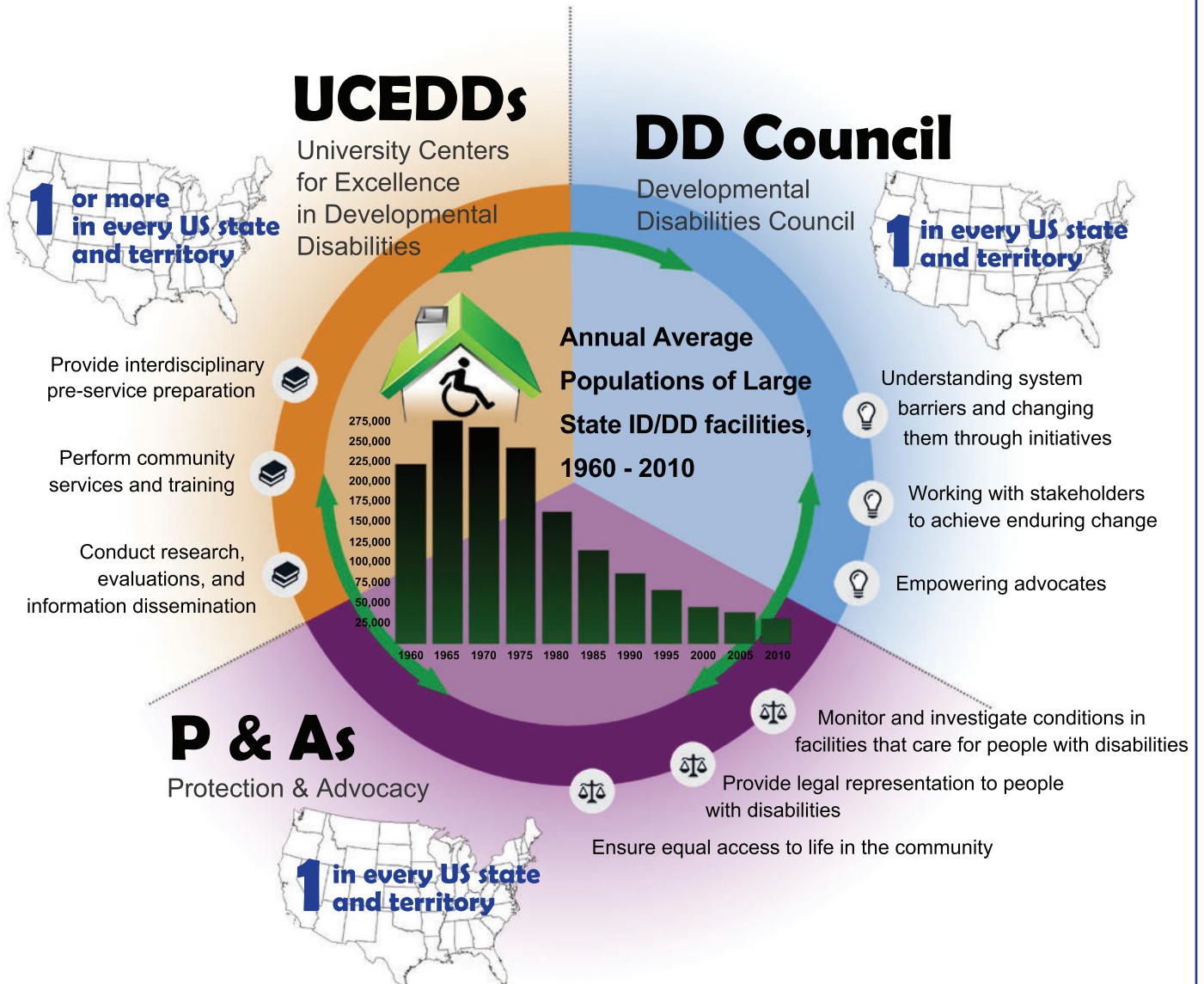
Ewōr 23 membōr ro ilo Koḡnje! eo, ijjitōñ jān Kabna eo. Membōr ro ekoba:

- Armej ro ewōr aer nañinmej in utaḡwe ko ilo eddekḡok
- Ro ilo baamḡe eo an armej ro ewōr aer nañinmej in utaḡwe ko ilo eddekḡok
- Director ro an state agency ko rej jermal ḡan armej ro ewōr aer nañinmej in utaḡwe ko ilo eddekḡok
- Rijermal ro jān nonprofit im private doulul ko me rej leḡok service ko im jipañ ḡan armej ro ewōr aer nañinmej in utaḡwe ko ilo eddekḡok.

Koḡnje! eo ej kowōnḡmaanḡok im lelōñtak integration ak maroñ kobaḡok im bōk koḡaan ilo aolep kain makūtḡūt im jermal, inclusion ak maroñ kobaḡok im erom juon membōr in jukjuk in pād eo, im independence ak jeḡa make mour ḡan armej in Arkansas ro ewōr aer nañinmej in utaḡwe ko ilo eddekḡok. Kemij kōmḡmane wāween in ilo am pukwōt men in aikuj ko rejḡap an DD community ak jukjuk in pād eo an ro ewōr nañinmej in utaḡwe ko ippāer ilo state in ad im kōnono kaki aikuj kein ilo am kōmḡman outreach, kōḡapḡok oktak im rejetak jermal in kijejeto ko ḡan kalōk doulul ko im jukjuk in pād ko.

State koḡnje! ko kōn nañinmej in utaḡwe ko ilo eddekḡok, āinwōt GCDD, rej bōk jāān in jipañ jān federal ak kien eo ioḡap, rej doulul ko rej make kien e er make. GCDD ej bōk an jāān in jipañ jān juon grant jān U.S. Department eo an Health im Human Services, Administration ḡan Community Living (ACL) ak Ra eo ḡan Mour ilo Juon Jukjuk in Pād ilo Administration eo an Intellectual im Development Disabilities (AIDD) ak Ra eo ej lale Nañinmej in Utaḡwe ko ilo Kōḡmānḡokjen im Eddekḡok ilo Ānbwin.

# The DD Act directs the DD Network Partners to collectively promote Community Integration.



**AUCD**

ASSOCIATION OF UNIVERSITY CENTERS ON DISABILITIES  
Research, Education, Service

**SOURCES:**  
Residential Services for Persons with Developmental Disabilities: Status and Trends Through 2010  
by Sheryl Larson, Amanda Ryan, Patricia Salmi, Drew Smith, & Allise Wuorio  
Research and Training Center on Community Living Institute on Community Integration/UCEDD  
College of Education and Human Development, University of Minnesota

## Arkansas Developmental Disabilities Network Eo

Koḡḡje! eo, Protection im Advocacy Organization eo (P&A), im University Center eo ñan Excellence ilo Developmental Disabilities (UCEDD) rej partner ro jilu re!ḡap ilo DD Network eo. Jouj im lale graphic ak pija eo ilo Peij 2.

Ilo an kajjojo doulul jerbali wūn ko ralikkar, kajjojo ekar ejaak ippān kōttōpar ko āier!ḡok wōt juon ñan kōmḡan bwe en wōr jerbali ippān doon im ekkejel ippān doon. Karōk in ej kōt!ḡok kajjojo ñan jerbali ippān doon ñan tōpar mejānkajjik ko raorōk an kakien in etan Developmental Disabilities Assistance im Bill of Rights Act eo ak Jibañ im Jiḡwe im Maroñ Ko an Ro Ewōr Aer Nañinmej in Utaḡwe ko ilo Eddek!ḡok: je!ā make peek mour ko aer, je!ā make mour, ḡap tōprak jān jerbali, maroñ koba!ḡok im bōk koḡaan ilo aolep kain makūt-kūt, im maroñ koba!ḡok ippān aolep ro jet ilo aolep wāween ko ilo jukjuk in pād eo ñan armej ro ewōr aer nañinmej in utaḡwe ko ilo eddek!ḡok.

Ro rej bareinwōt niknik im ḡap aer bōk koḡaer ilo Arkansas DD Network eo rej elōñ state agency ko āinwōt Department eo an Human Services Division eo an Developmental Disabilities Services im Arkansas Rehabilitation Services; koḡḡje! ko jet, commission ko im task force ko āinwōt Arkansas State Independent Living Council eo im Employment First Task Force eo; im elōñ direct service provider ro.

## Wāween ko ñan Tōpar Arkansas DD Network

### **Governor's Council on Developmental Disabilities**

1515 West 7th Street, Suites 320-330  
Little Rock, Arkansas 72201  
Talboon: 501-682-2897  
Email: [ddcstaff@dfa.arkansas.gov](mailto:ddcstaff@dfa.arkansas.gov)  
[GCDD.arkansas.gov](http://GCDD.arkansas.gov)

### **Disability Rights Arkansas**

400 West Capitol Avenue, Suite 1200  
Little Rock, Arkansas 72201  
Talboon: 800-482-1174  
Email: [info@disabilityrightsar.org](mailto:info@disabilityrightsar.org)  
[DisabilityRightsAR.org](http://DisabilityRightsAR.org)

### **Partners for Inclusive Communities**

322 Main Street, Suite 501  
Little Rock, Arkansas 72201  
Talboon: 800-342-2923  
Email: [partners@uark.edu](mailto:partners@uark.edu)  
[UofAPartners.uark.edu](http://UofAPartners.uark.edu)



Governor's Council on  
**Developmental Disabilities**  
ARKANSAS

*Inclusion. Integration. Independence.*

1515 West 7th Street, Suites 320-330  
Little Rock, Arkansas 72201  
(501) 682-2897  
[GCDD.arkansas.gov](http://GCDD.arkansas.gov)